

SOC 1: Introduction to Sociology

with Dr. Jeniece Lusk

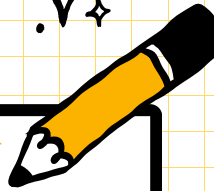
Fall 2024



Course Description

In this course, students will explore sociology as a way of understanding the complex world around us. Students will learn how the discipline explains social, cultural, political, and economic forces. Using a global, sociological perspective, students will critically examine topics including, but not limited to: socialization, culture, social constructionism, social inequality, intersectionality, and systemic oppression. Course content will include lecture, activities, storytelling, media, and discussion, and will reflect the histories and lived experiences of California Community College students.

Student Learning Outcomes



- SLO 1. Explain and apply major theories and concepts in the field of sociology.
- SLO 2. Critically analyze contemporary society from a sociological perspective.
- SLO 3. Apply their personal histories and lived experiences to course content.

Methods

This course employs multiple teaching and learning methodologies. These include discussions, student to student interactions, writing assignments, exams, and multimedia.

Important Dates

Last Day to Drop & Be Eligible for Enrollment/Course Fee Refund	Sun, 1 Sept
Last Day to Drop Without a "W"	Sun, 8 Sept
Last Day to Drop With a "W"	Sun, 17 Nov
Last Day to Opt for P/NP	Fri, 13 Dec
First Census Date	Mon, 9 Sept
Mid-Term Date	Mon, 21 Oct

Class Meetings

This course is delivered online via Canvas. Many assignments and materials are provided via Canvas.

This 17.5 week course begins on 19 August and ends on 13 December. The course is asynchronous, and there are no formal class sessions.

SOC 1 Facilitator



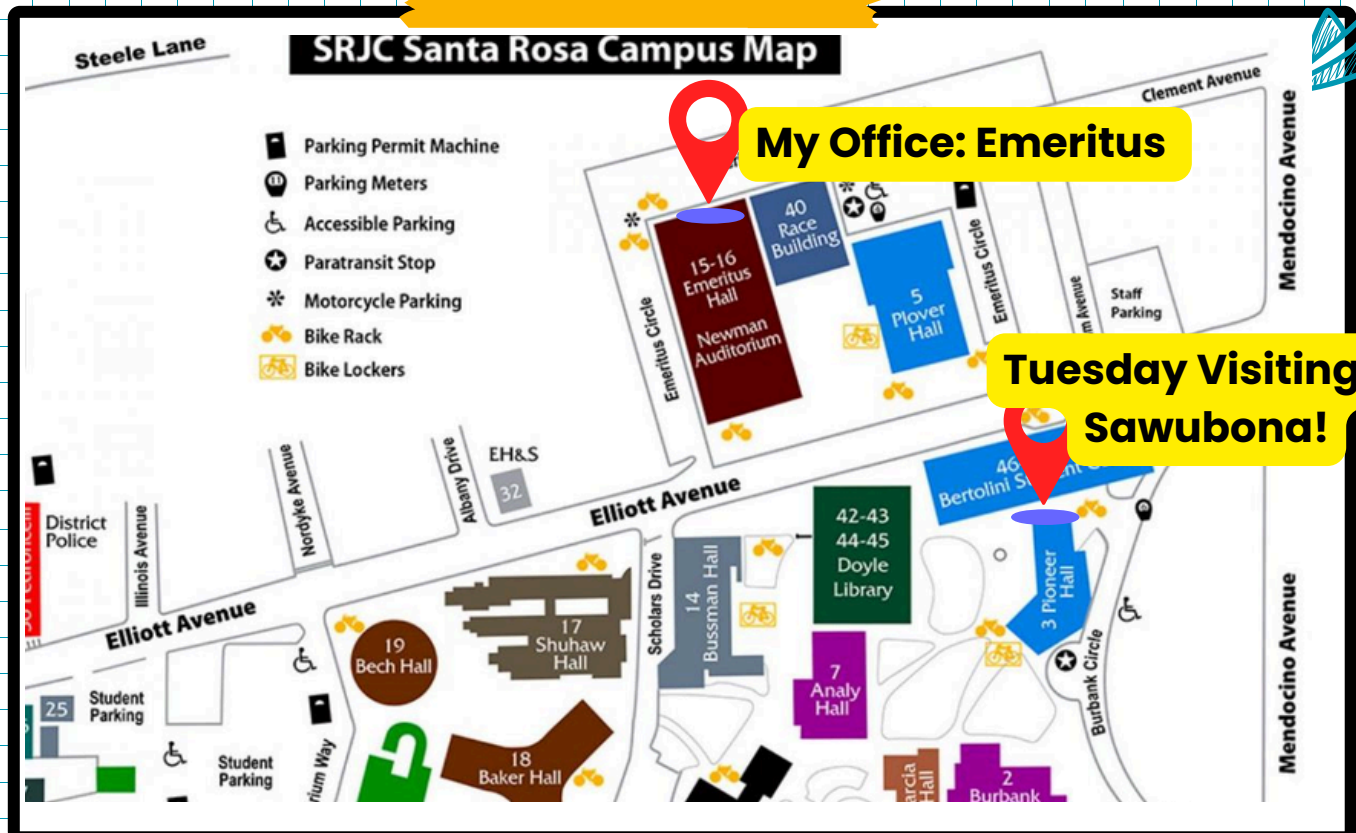
Instructor: Dr. Jeniece
she/her

I'm Dr. Jeniece Lusk, and I'm an applied sociologist at SRJC. I hope that you'll visit me during my visiting hours on Tuesdays & Thursdays from 9 to 11am. You can schedule a Zoom meeting with me using Bookings. You can also contact me using the Canvas inbox, Pronto, or my email account at jlusk@santarosa.edu.

Refer to Module 0 Student Visiting Hours for more details about how to communicate with me.



Where to Find Me:



Resources & Materials



Textbook

This is a zero textbook cost (ZTC) course: the required textbook for this course is free and available immediately. For social reading assignments, you will have access to assigned chapters via Perusall. You can download a PDF of the text or access the text online for free. If you prefer a print version, you can purchase one via Amazon.





As an enhancement to our course textbook, an audiobook version is also available on [YouTube](#), [Spotify](#) and [Apple Podcasts](#). Search for "OpenStax Audiobook" on each platform or click the links below. While this resource is not meant to take the place of reading, you might find it to be a helpful study tool.

- [Spotify](#)
- [Apple Podcasts](#)
- [YouTube](#)

Perusall
Tip: Perusall is required for the social reading assignments, but I suggest downloading the PDF for your initial reading of content.



Apps & Platforms

-  **CANVAS**
BY INSTRUCTURE
-  **Google**
Docs
- Perusall**
-  **Bookings**
-  **pronto**

We use a variety of programs and apps in this course--all are free and accessible from day one. These are required. Module 0 contains individual tutorials and explanations for Perusall and Pronto; you will access each of these apps from within Canvas.

Please make sure that you have access to each before moving on to Module 1.

Tip: Google/YouTube is your friend for troubleshooting. If you ask me, I'm going to Google the problem and send you a link. Skip the middle man and befriend Google.

Technical Help & Troubleshooting

Get help using any of the support resources below:

- Put in a [SRJC Student Help Ticket](#) anytime
- Call or text 1-844-505-4565 on weekdays 9AM - 9PM PDT
- Click on Help on the left and then click 'Chat with Canvas Support (Students)' anytime.

SOC 1 Assessments

Assessments & SLOs



Each assessment for this course has been selected with the following student learning outcomes in mind; these reflect the skills and knowledge that you're expected to learn and display in this course.

SLO	Relevant Assessment
SLO 1. Explain and apply major theories and concepts in the field of sociology.	Exams
SLO 2. Critically analyze contemporary society from a sociological perspective.	Exams Reflection 2 Perusall Annotations
SLO 3. Apply their personal histories and lived experiences to course content.	Reflection 1 Perusall Annotations

Grading Distribution

Assessments are weighted using the following schema:

Assessment	Weight	Due
Perusall Annotations	25%	Weekly
Reflection 1	15%	10/13
Reflection 2	15%	12/3
Exam 1	10%	9/23
Exam 2	15%	10/26
Exam 3	20%	12/16

Grading Scale

The grading scale for this course follows:

Letter Grade	Percent
A	90%+
B	80% up to 90%
C	70% up to 80%
D	60% up to 70%
F	Below 60%

SOC 1 Assessments

Grading Philosophy

Grading Goal

The goal of my assessments in this course is to capture your ability to fulfill the learning outcomes set forth in the course outline of record and syllabus, and this relies on you communicating your comprehension and competence via our assessments.

Grading Policies

This course includes both **formative** and **summative** assessments. Formative assessments focus on the progress of your learning throughout the course and occur in regular intervals; these include homework quizzes, Perusall annotations, and application practices. Summative assessments focus on evaluation of your competency regarding specific learning outcomes at the end of instructional units (usually across several modules, weeks, or chapters of a text); these include exams and written reflections.

Formative Assessments

In this course, you'll notice that formative assessments have two due dates. The first due date is the preferred due date, which is highly encouraged for successful outcomes in the course. The second due date falls just following the relative summative assessments. You should also notice that formative assessments are graded using a narrative system (see below, "Narrative Grading"), and that you are often encouraged to resubmit, using the feedback that you've been provided to guide your learning. The benefit and purpose of this strategy is to allow you space to build your comprehension without being penalized for learning. You are encouraged to work towards improving and enhancing your understanding and expression of sociological concepts.

Summative Assessments

For reflective writing assessments, you'll notice opportunities to resubmit along with multiple due dates. However, exams and final submissions have a single due date-- please take note. These latter single-submission assessments are a final measure of competency.



Refer to Module 0 | Navigating the Course for more info and due date schedule.

SOC 1 Assessments

Due Dates

With the exception of Class Activities & Exams, assessments have suggested & final due dates. You cannot submit a given assignment for credit after the final due date.

Assessment	Text/Chapters	(Suggested) Due Date	Final Due Date
Perusall 1	Ch 1 An Introduction to Sociology	8/25	Sunday, 9/29 by midnight
Perusall 2	Ch 2 Sociological Research	9/1	
Perusall 3	Ch 3 Culture	9/8	
Perusall 4	Ch 4 Society & Social Interaction	9/15	
Perusall 5	Ch 6 Groups & Organization	9/30	Sunday, 11/3 by midnight
Perusall 6	Ch 7 Deviance, Crime, & Control	10/6	
Reflection 1		10/13	
Perusall 7	Ch 10 Global Inequality	10/20	Sunday, 12/15 by midnight
Perusall 8	Ch 11 Race & Ethnicity	11/3	
Perusall 9	Ch 12 Gender, Sex, & Sexuality	11/18	
Perusall 10	Ch 15 Religion, Ch 16 Education		
Reflection 2		12/3	



Refer to Module 0 | Navigating the Course for more info and due date schedule.

SOC 1 Assessments



Assessment Grading Policies



Narrative Grading

You'll notice that some assignment types (primarily Perusall annotations and reflections) use the following narrative grading scheme where "Accomplished" is considered "Complete" and "Progressing" and "Missing" are considered "Incomplete". Resubmission opportunities are available to all, but expected of those who do not earn "Accomplished" on an assessment. You are able to resubmit as many times as necessary to achieve the "Accomplished" status for these assessments, up until the second or final submission date. Once the second or final submission date arrives, the numerical impact is set.

- **Accomplished: Excellent Work** ★ (100% of value): this indicates that the assignment has met or exceeded the criteria as outlined in the assignment instructions and rubric.
- **Progressing: Please Revise** 📌 (60%+ of value): this indicates that the assignment can use a bit of reworking in order for it to meet or exceed the criteria as outlined in the assignment instructions and rubric. Participants are invited, but not required, to submit a revision of their work for additional feedback. Once the assignment has been reworked, I will change the score to "Accomplished."
- **Missing** (50% of value): this indicates that the assignment has not yet been submitted. Learners are invited to submit their work, even if it is late, as we believe that completing the work is critical to mastering the course learning outcomes. Please note that there may be a slight delay in receiving assignment feedback if the assignment is submitted late.

SOC 1 Assessment Types

Formative Assessments

Perusall Annotations (PAs) are social reading discussions that learners are expected to participate in. This tool replaces traditional reading quizzes and aims to enhance the academic reading experience for all.

Each PA should be completed by 11:59pm prior to the Sundays they are assigned. For each PA you are expected to add 5 meaningful and original annotations of 75+ words each, evenly distributed throughout the reading. You can include questions, images, links, meaningful commentary, and observations. Each should be your own writing, and each should be readable-- please use punctuation as well.

Refer to Module 0 | Using Perusall for more info.

Summative Assessments

Exams are the main summative assessments for this course, and are delivered via Canvas "Quizzes". These include original short answer, true/false, and multiple choice questions. Please see the detailed description of exams in Canvas Module 0.

Each exam spans a 72 hour period that begins at 12:01 am on the scheduled date and ends at 11:59pm on the due date. Regardless of when you begin, you must complete the exam in one sitting/attempt.

Refer to Module 0 | Exams for more info.

Reflections are a writing based summative assessment, and are also delivered within Canvas. Each reflection will integrate learners' lived experience with relevant sociological content. Each reflection will require learner's to also integrate a specified text as well.

Refer to Module 0 | Reflections for more info.

For all assessments, whether Formative or Summative, you will be held to very high standards regarding plagiarism, integrity, and AI/generative/assisting software use. See Module 0: Integrity for more.

Schedule & Important Dates

Schedule

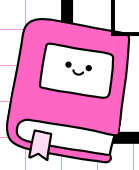


Release Date	Module & Assigned Reading	Suggested Assessment Due Dates
19 Aug: First Day of Class!	8/19 Course Overview 8/20 Ch 1 An Introduction to Sociology	
26 Aug	Ch 1 An Introduction to Sociology	Perusall 1
2 Sept	9/2 Labor Day Holiday Ch 2 Sociological Research	Perusall 2
9 Sept	Ch 3 Culture	Perusall 3
16 Sept	Ch 4 Society & Social Interaction	Perusall 4
23 Sept	Ch 5 Socialization	Exam 1 on Ch's 1, 2, 3, 4
30 Sept	Ch 6 Groups & Organization	Perusall 5
7 Oct	Ch 7 Deviance, Crime, & Social Control	Perusall 6
14 Oct	Ch 9 Social Strat in the U	Reflection 1 Due

9/1: Last day to drop with refund

9/8: Last day to drop w/o a "W"

6/28: Last Day of Class
Last Day to Choose Pass/No Pass



Schedule & Important Dates

Schedule

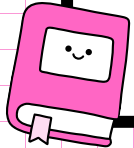


Release Date	Module & Assigned Reading	Suggested Assessment Due Dates
21 Oct	Ch 10 Global Inequality	Perusall 7
28 Oct	Ch 11 Race & Ethnicity I of II	Exam 2 on Ch's 5, 6, 7, 8, 9, 10
4 Nov	Ch 11 Race & Ethnicity II of II	Perusall 8
11 Nov	11/11 Veterans Day Holiday Ch 12 Gender, Sex, & Sexuality I of II	Perusall 9
18 Nov	Ch 12 Gender, Sex, & Sexuality II of II	Perusall 10
25 Nov	Ch 15 Religion Ch 16 Education	Perusall 11
2 Dec	Ch 17 Government & Politics Ch 20 Population, Urbanization, & Env	Reflection 2 Due
9 Dec	Ch 21 Social Movements & Change	Perusall 12
12/13: Last Day of Class	TBD Final Exam on Ch's 11, 12, 15, 16, 17, 20, 21	

11/17: Last day to drop w/a "W"

12/13: Last Day of Class

12/13: Last Day to Opt for P/NP



SOC 1 Expectations

Integrity Expectations

Students who register in SRJC classes are required to abide by the SRJC Student Conduct Standards. Violation of the Standards is basis for referral to the Vice President of Student Services or dismissal from class or from the College. See the Student Code of Conduct page and Module 0: Integrity for more.

- **Academic Dishonesty:** SRJC defines academic dishonesty as "any act of deception, benign or malicious in nature, in the completion of any academic exercise" including, but not limited to the following:
 - *Copying from someone else's test*
 - *Submitting work that is not your own*
 - *Submitting work presented previously in another course, if contrary to the rules of either course*
 - *Altering or interfering with grading*
 - *Using material during an exam that is not allowed*
 - *Consulting with someone other than the instructor during an exam*
 - *Committing other acts that defraud or misrepresent"*

If you commit plagiarism on any part of an assignment, the whole assignment automatically receives a grade of "0". Furthermore, an academic integrity report will be filed with the administration.

- **AI Generated Content:** Using an AI program to generate answers or content for any assignments in this course is also considered a violation of SRJC's academic integrity code. This includes using generative formatting services such as Grammarly or built-in AI Tools in any documentation or word processing platform.
- **Other Examples of Academic Dishonesty**
 - Stealing examinations, tests, quizzes, or scoring key for tests.
 - Removal of class exams or class assignment projects without instructor approval.
 - Submitting course materials to any online sites (e.g. Course Hero, Chegg, etc).
 - Having any other person or student submit academic work in your name.
 - Giving your academic work to another student to plagiarize.
 - Purposely sharing your paperwork with another student to copy for a test or an assignment especially when it is not a group project or group response to a test.
 - Taking a quiz or examination for another person.
 - Lying to an instructor or to a college official to improve your grade.
 - Accessing the college computer system to change your grades or those of other students.